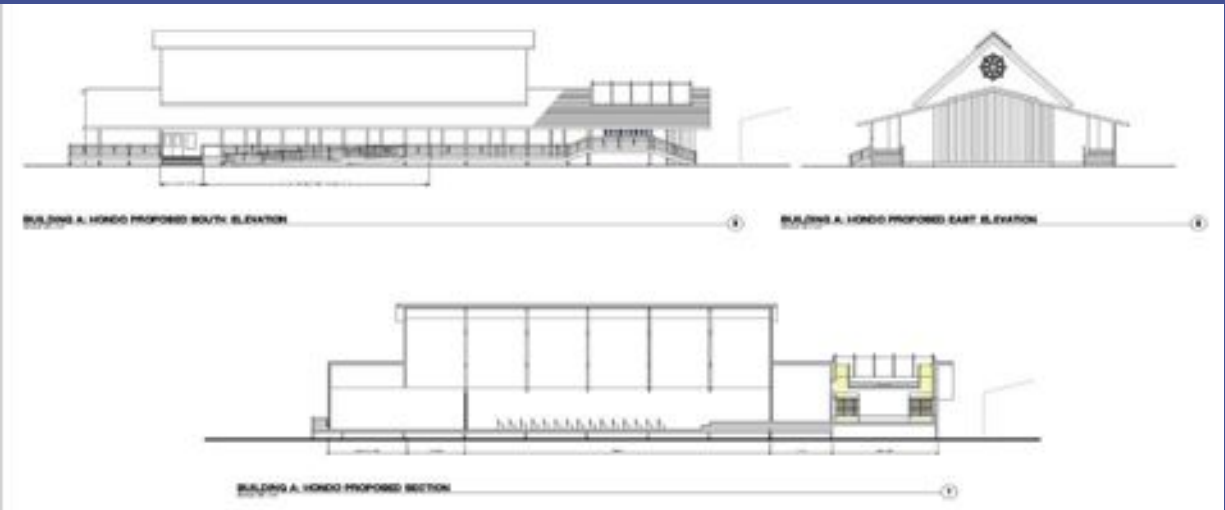


Mountain View Buddhist Temple
50th Anniversary Project
A Capital Campaign



MVBT 50th Anniversary Project



Fifty years ago our Founding Temple Members started Mountain View Buddhist Temple. We need to keep their Spirit and Passion alive. Because of our aging Keiros and new influx of youth we need to make our Temple facilities more accessible, safer and make room for our growing membership. It's our Generation that needs to step up now, just as our Founding Members did. It's our turn to make a difference and we can start by donating to the MVBT 50th Anniversary Project and making the next 50 years a reality.

In Gassho,



Glenn Kitasoe
Temple President

Overview of MVBT Property



The year 2011 is upon us and proves to be a uniquely exciting one for the Mountain View Buddhist Temple as we celebrate our 50th Anniversary of becoming an official Temple of the Buddhist Churches of America. A big part of the celebration of this momentous year is embracing a special commemorative project. After careful deliberation following over seven years of research and investigation of practical and necessary needs for the Temple, the Board of Directors have found and approved an ideal "50th Anniversary Project": the much needed renovation and remodeling of both the YBA Hall and the Hondo plus the building addition of a new columbarium that we call the Nokotsudo.

LEGEND

	Entrance
Bldg A	Hondo
Bldg B	YBA Hall
Bldg C	Dharma School Classroom
Bldg D	Sangha Hall & Gym
Bldg E	Parsonage
Bldg F	Storage Garage
	Property Line

"When I came to the Mountain View Buddhist Temple, I found that the atmosphere there was unlike any other place I had previously been to. Everyone was friendly and the chanting sent chills down my back. As I began to attend more services, I found that I was really connecting with Sensei's messages. It wasn't just the Dharma messages, but also the many friends I have made that make this temple such a special place. For many people, one of their greatest fears is not being able to fit in. This was exactly the case for me when I first came to the temple. While I immediately enjoyed the chanting and messages, I wasn't so sure I would be able to connect with the other kids. However, my worries were quickly done away with as I quickly began to see that all of the kids, particularly the teens in the Dharma school and YBA were all incredibly nice and welcoming towards me."

*Kendall Dea
Class of 2009*



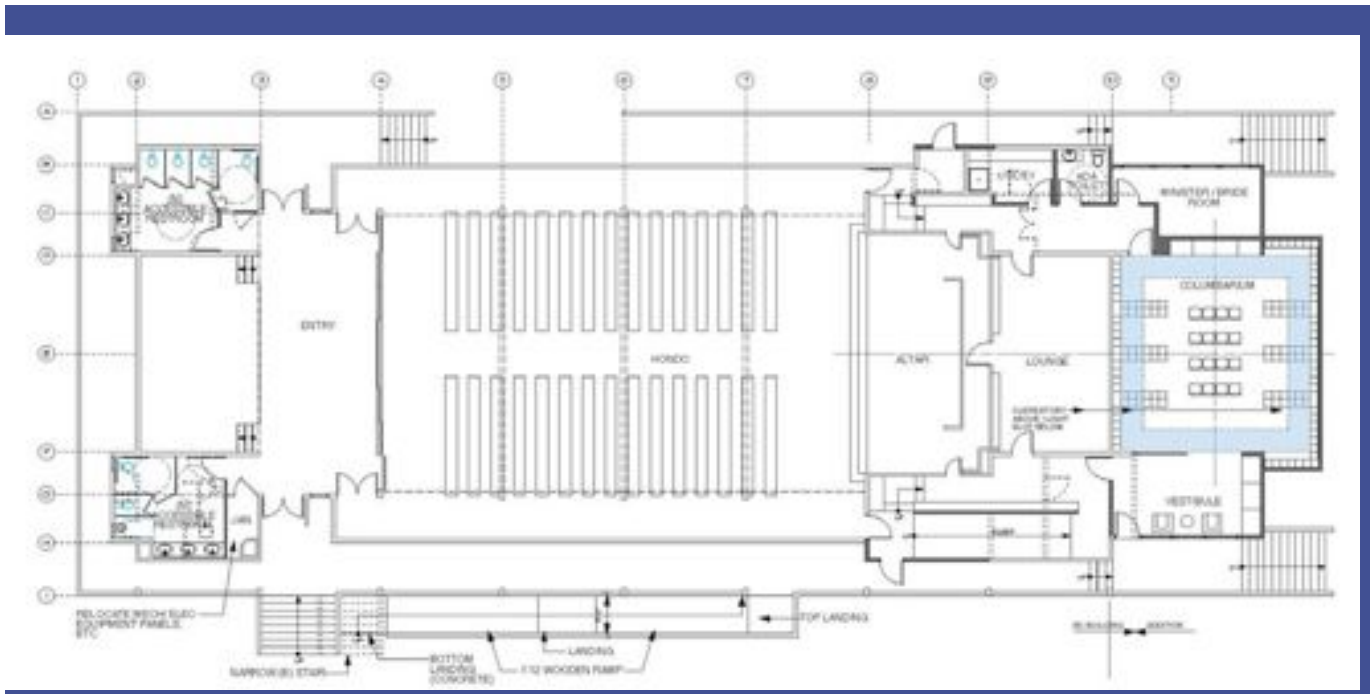
The MVBT 50th Anniversary Project is actually the first of four phases of a "Master Plan" that concerns the renovations of buildings (A) Hondo, (B) YBA Hall, (C) Dharma School Classrooms, (D) Sangha Hall and (E) Parsonage.

Since the scope of the Parsonage renovations are relatively small and can be implemented as the needs arise, they will not be included in the discussion of the larger Master Plans at this time, yet it does bear mentioning for future considerations.

The primary concern of our master plan is life safety and the secondary concern is improved function. In order to meet the governmental and legal standards for the safety of our aging and youthful members alike it is necessary to improve accessibility by a series of easily navigated pathways linking all the buildings. This will include the addition of multiple ADA approved ramps both externally and internally where indicated.

Due to mandatory structural retrofitting of both the Hondo and the YBA Hall it was decided to address both buildings' seismic deficiencies together in the first phase of the Master Plan including remodeling to ADA compliant restrooms and facilities.

Hondo (A)



Hondo floor plan

The new columbarium will be a 1300 sq.ft. addition on the rear of the Hondo. It will have it's own altar and house as many as 900 niches surrounding a quiet sitting room that will be serenely lit by "halo" lighting from eco-friendly skylights. Accessibility issues will be addressed by handicap ramps inside from the Nokotsudo and O-naijin to the Ge-jin and outside down to the Courtyard. Of course, larger ADA compliant restrooms and modern fixtures are standard requirements.

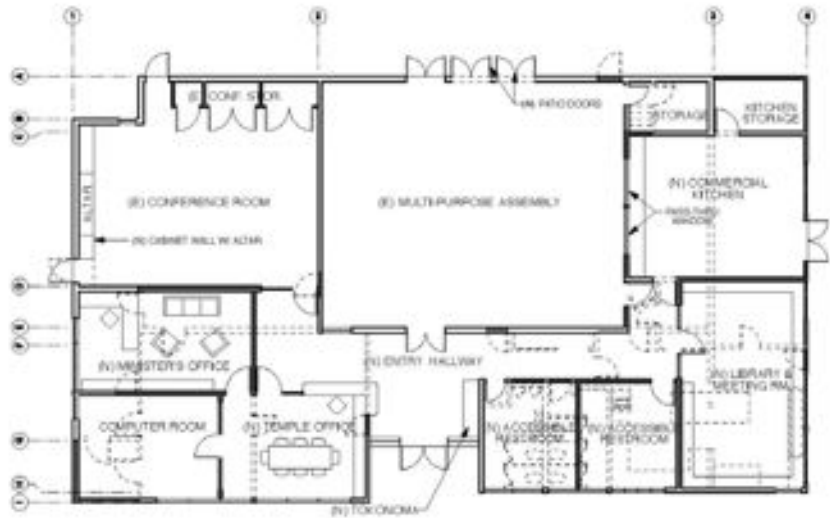


Conceptual Drawings of the Columbarium

YBA Hall (B)

"This temple feels like a second home, I mean I spend enough time here for it to be. I basically grew up here and I know that this will always be a place that I will feel welcome and secure. This is a place where I can let my ego down just a bit and its definitely been where I've had the most opportunity to grow in confidence and as a person. It didn't even matter if we made a mistake because well we all made mistakes and we had all formed a bond where we could just laugh at ourselves and do better next time."

*Meagan Matsumoto
Class of 2009*

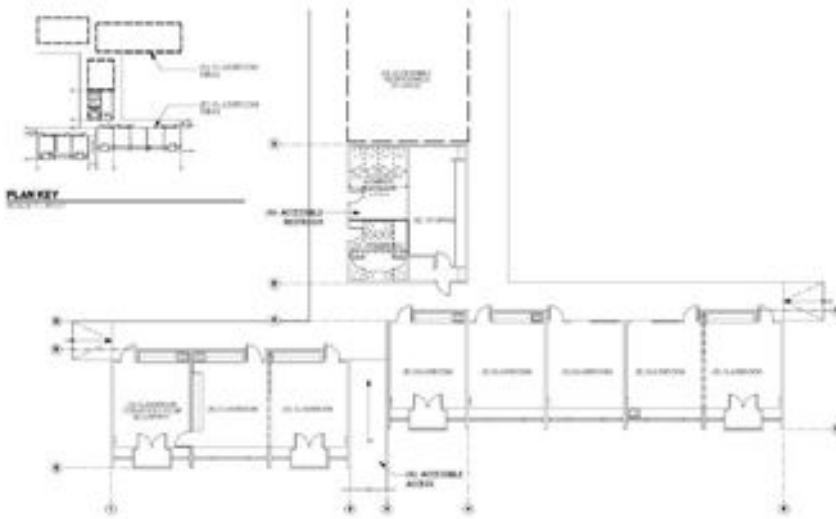


YBA Hall floor plan

The other half of the 50th Anniversary Project is a major renovation of the YBA Hall that will involve complete structural reinforcement for substantial seismic deficiency and remodeling of the restrooms, the kitchen and the business office. Relocation of the library to this building from the education wing can also be accommodated or be used as a small conference room, or even as more classroom space.



Classrooms (C)



Classroom floor plans

The education buildings which houses the Dharma School Classrooms are seismically sound but still require restroom remodeling for ADA compliance. Improved soundproofing of the walls, electrical, heating, cooling and lighting are all concerns that will be addressed. The possible doubling of the size of classroom space by the addition of a similar education wing will be dependent on the success of fundraising.

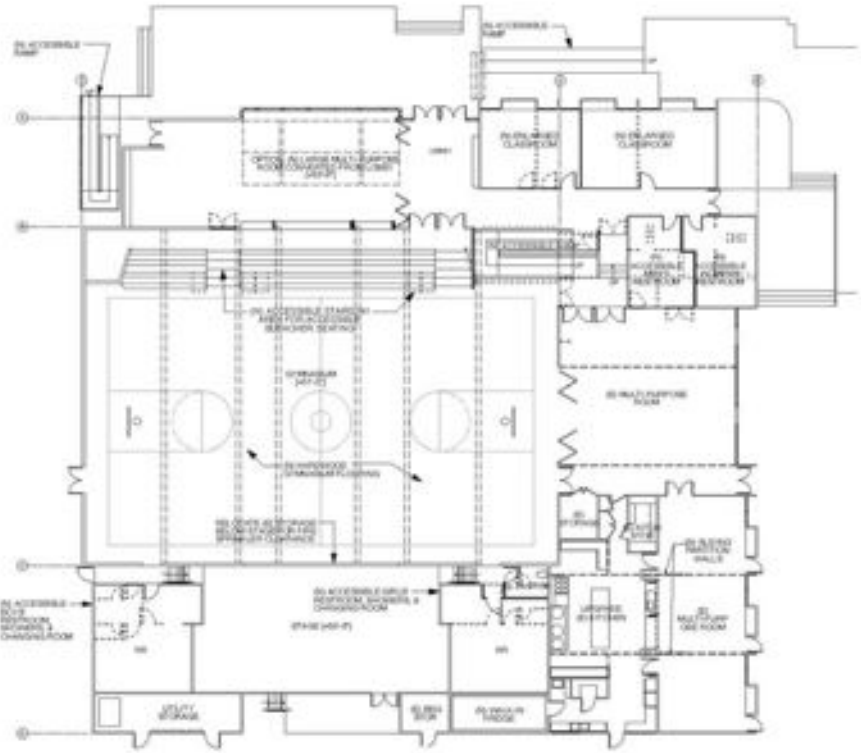
"Growing up, I always felt different from my family and different from anything that had to do with our heritage. I have not fully lost the feeling of being judged, but coming to the Temple has helped a lot. I've learned that people will accept you for who you are and not what you are, and I have also learned to be more open minded so that I can accept others for who they are as well."

*Heather Andrews
Class of 2009*

Sangha Hall (D)

"I've always been accepting of others, but I didn't realize how important it is or what it means for people to be accepted. What I learned from Dharma School was that acceptance is accepting a person for who they are for their values and beliefs, what is important to them, and their differences and similarities. So I would like to thank you for giving me the opportunity to learn from my Dharma School teachers and from Reverend Koyama, and thank all of the friends I have made here for accepting me for who I am and always being there for me."

*Doug Hasegawa
Class of 2009*



Sangha Hall floor plans

The Sangha Hall–Gymnasium Complex is also seismically sound but needs remodeling of the restroom and showers, an internal handicap ramp, upgrades to the kitchen fixtures and facilities, new gym walls, ceiling, flooring, a new audio system, possible sound proof partitioning of the lobby, an outside storage building and fire safety improvements to the BBQ area.

Guide to Giving

"As a child I never really realized it, but I am so grateful to be a member of this community. Especially here at the Mountain View Buddhist Temple, I have come to the conclusion that the Sangha has really become my second family. For me going to church every week isn't just a place for me to play house with my friends and do fun crafts anymore, but rather a place where I can feel completely comfortable and safe to express my thoughts and truly be myself...Being a Buddhist and growing up in this community is something that will remain with me for the rest of my life, and hopefully it will be something that I can share with my children and grand-children as well."

Megan Sawamura
Class of 2008

Each person has different resources, and your decision to give is ultimately a personal one. All gifts will be accepted with gratitude and all will help our Temple's future growth.

Our ultimate goal is to build what we can afford, and we will scale the projects to reflect the funds we receive. We will not expose the Temple to the possibility of financial loss.

The information below may be used as a guide for the amount and timing of your donation.

Monthly cost of giving (over five years)

While lump sum gifts given at the start of the Capital Campaign are helpful in that they can help to accelerate the building project, we also welcome pledges that are paid out over an extended period (e.g., three years, five years, etc.).

The following is a breakdown of the monthly cost of giving over a five-year period for different pledge amounts:

Amount per month	Amount per year	Total pledge amount
\$10	\$120	\$600
\$25	\$300	\$1500
\$60	\$720	\$3600
\$117	\$1400	\$7000
\$150	\$1800	\$9000
\$234	\$2800	\$14,000
\$417	\$5000	\$25,000

As you can see, modest monthly contributions can amount to a significant total pledge amount.

Our primary goal for the MVBT 50th Anniversary Project with contingencies is \$3.65 million. On the average, for the current membership of 526, this would require a yearly pledge of \$1400 for five years, or a five-year monthly pledge of \$117.00 per individual member; either way a total donation \$7000 per member is needed to fund this first phase of our Master Plan.

Temple members have worked hard over the years to build Expansion Fund accounts to help cover any shortfall in our capital campaign but it would be ideal to raise the amount needed and to save seed money for future renovation phases.

How to Pledge and Give

Letter of Intent:

Please fill out the letter of intent form included with this pamphlet. Additional forms can be obtained from the Temple office.

In person:

You may put your pledge form in the donation Pledge Box that is located in the Temple office. You may also give it to any member of the Capital Campaign Committee.

By mail:

You can mail your pledge form to Mountain View Buddhist Temple, 575 N. Shoreline Blvd., Mountain View, CA 94043.

By email:

You can send an email to rlnakano@aol.com indicating your pledge amount. Please include your name, the total pledge amount, the intended payment schedule and any other relevant information in the body of the email. A pledge form will be on the Temple's website at mvbuddhisttemple.org

Payment can be made with cash, checks or donations. Your bank may be able to set up an automatic payment if you wish to donate monthly.

Stock may be transferred directly to the Temple's brokerage account. If you plan to donate stock, we will contact you with more information.

Of note: while all donations to the Temple are tax deductible, donating appreciated stock can be a way to avoid paying capital gains tax, while at the same time taking a deduction on the current market value of the stock. Ask your tax advisor for details.

"I would simply like to thank all the temple members and the temple as a whole for all the encouraging support for the last four years... I came to temple in search of a new way of life and a new way of thinking, and each individual I've been honored enough to touch lives with has shown my family and me nothing but acceptance and compassion."

*Eric Jong
Class of 2009*



Planned Giving

"I've been a member of the Mountain View Buddhist Temple for 12 years. Twelve years of coming to temple every Sunday, volunteering in Obon, and more importantly attending service with the Sangha every Sunday... Mountain View Buddhist Temple has shaped me to be who I am today. Being part of the temple allowed me to appreciate the small community, active environment, friendliness and selflessness of others. These four things became the main criteria in picking my college. If my parents hadn't brought me to Temple for twelve years, I wouldn't be who I am today.

*Kendrick Arakaki
Class of 2010*

In addition to your gift or pledge to the capital campaign, a planned gift is another way for you to make a lasting impact on the temple. A planned gift provides the resources that create extraordinary opportunities and preserve our future. A planned gift is a major gift made during one's lifetime or at death as part of your overall estate plan. A planned gift can be cash, appreciated securities/stock, real estate, artwork, partnership interests, personal property, life insurance, a retirement plan, etc., and with your gift, you could also receive substantial tax and financial benefits.

In addition to the facilities improvements funded by the current capital campaign, the programs of the Mountain View Buddhist Temple depend on your good will. To that end there are a myriad of easy giving options from which you can choose-naming us as a beneficiary in your will to a more complex trust arrangement.

We are working on a separate publication that will outline ways that you can help your Sangha in this special way".



MVBT Onaijin

Why Give?



The founders of our temple had an aspiration for a Buddhist Temple to serve the needs in the Mountain View, Los Altos, and Sunnyvale area. 50 years ago, we bear the fruit of their dedication, sacrifice, sweat and dreams, when the Mountain View Buddhist Temple was established as an independent Buddhist Churches of America Temple.

We, the present caretakers of this temple must also awaken a similar aspiration to teach, propagate and spread the Nembutsu into this area that has become a multi-ethnic community. To accomplish this, we must up-grade our physical facilities that will house the spiritual foundation and activities of our temple. That is why we are reaching out to you. To help us realize this aspiration that ultimately began with our past, please consider a contribution or a pledge so that our temple may continue to serve the Jodo Shinshu Buddhist needs of this area for the future.

At the end of his major doctrinal masterpiece, Shinran concludes his Kyogyoshinsho, with a passage from the Chinese monk, Doshaku. This is Shinran's Aspiration for all of us:

I have collected true words to aid others in their practice for attaining birth in the Pure Land, in order that the process be made continuous, without end and without interruption, which those who have been born first guide those who come later, and those who are born later join those who were born before. This is so that the boundless ocean of birth-and-death be exhausted.

Gassho,

Rev. Dean Koyama

"I have learned so much about compassion from the various stories and talks given from Sensei and the way our temple members behave and live a life of compassion. This caring for others is shown in so much of what the people at the temple do, whether it be helping someone who's cleaning up alone or organizing a walk for a friend who is sick. Now, I too cannot help but care whenever I see someone struggling because of how natural it is at our temple

Thank you so much for bringing me happiness."

*Alyssa Imai
Class of 2010*

MVBT Capital Campaign Committee & Supporters

For More Information

Capital Campaign Committee

Russ Nakano, *Chairperson*

Reverend Dean Koyama

Glenn Kitasoe

Mel Inouye

Ed Ryu

Ron Murata

Bob Imai

John Arima

Rich Endo

Min Uyehara

Bob Matsumoto

Naomi Matsumoto

Ray Murakami

Jim Satake

Hiroji Kariya

John Arao

Dale Sasaki

Bruce Morimoto

Doug Sawamura

Supporters

Julie Ryu

Phyllis Sawamura

Joy Morimoto

Nancy Sugimoto

Gail Satake-Nakamura

Debbie Kitani

Keith Kitani

Tracey Mukoyama

Matt Mukoyama



GLOSSARY

Dharma – *The teachings of the Buddha. The Universal Truths of Life.*

Gassho – *(Literally putting our palms together.) This is a Buddhist gesture of respect.*

Gejin – *The area where the members sit during service.*

Hondo – *The main worship hall at the temple.*

Jodo Shinshu – *The sect of Buddhism that we practice at MVBT.*

Keiro – *Literally means to respect the elders. It refers to senior citizens.*

Kyogyoshinsho – *The major doctrinal work of Shinran Shonin laying the foundation of Jodo Shinshu Buddhism.*

Nembutsu – *(Literally to think upon the Buddha.) It refers to the practice of reciting the name of Amida Buddha, “Namo Amida Butsu.” This act helps us to focus our minds on the Buddha’s teachings. It is not meant to be a means to gain some benefit, but rather a response of appreciation and gratitude.*

Nokotsudo – *A columbarium; a place for the respectful storage of a loved ones cremated remains.*

Obon – *Summer time festival to honor our ancestors who have passed away.*

Ojuzu – *Otherwise called Onenju in the Jodo Shinshu tradition and sometimes referred to as Thought Beads in American culture. They help us focus our thoughts when we practice Nembutsu.*

Onaijin – *The altar area which houses the image of the Buddha.*

Sangha – *The community of members supporting a temple.*

Sensei – *A title for a doctor, teacher or any person distinguished for wisdom and knowledge; At MVBT, it’s our Reverend Dean*

Shinran – *The founder of the Jodo Shinsu sect of Buddhism. (1173-1263)*

YBA – *Young Buddhists Association; the high school religious youth group of the temple.*



Mountain View Buddhist Temple
575 North Shoreline Blvd.
Mountain View, CA 94043
Office: 650.964.9426
mrbuddhisttemple.org